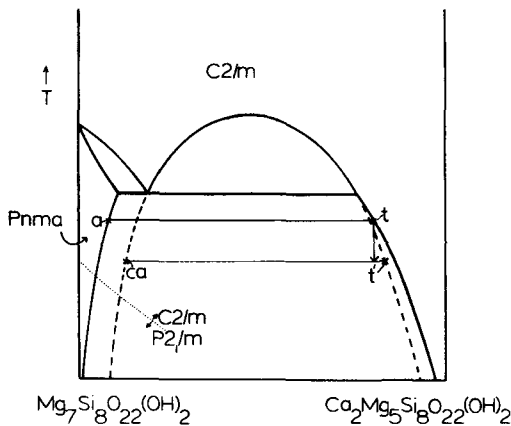


MINERALOGICAL MAGAZINE, SEPTEMBER 1983, VOL. 47, P. 417

Amphibole microstructures: some analogies with phase transformations in pyroxenes—addendum

I AM grateful to Dr P. E. Champness for pointing out that the schematic subsolidus phase diagram shown in fig. 1c of Carpenter (1982), for the system

anthophyllite-tremolite, is incomplete. Details of the tremolite limb of the solvus were not considered and, although they influence neither the observations nor conclusions presented in that paper, they should be correctly displayed. A revised version is therefore presented here (fig. 1).



REFERENCE

Carpenter, M. A. (1982) *Mineral. Mag.* **46**, 395-7.

[Manuscript received 2 December 1982]

© Copyright the Mineralogical Society

FIG. 1. Revised version of the schematic anthophyllite-tremolite subsolidus phase relations (after Carpenter, 1982, fig. 1c). *t* and *a* represent the compositions of coexisting anthophyllite and tremolite crystals at the time of their crystallization; *t'* and *ca* represent the compositions of tremolite host crystals and exsolved clinanthophyllite lamellae.

Dept. of Earth Sciences, University of Cambridge,
Downing St., Cambridge CB2 3EQ

MICHAEL A. CARPENTER