

- Droop, G. T. R. (1989) Reaction history of garnet-sapphirine granulites and conditions of Archaean high-pressure granulite facies metamorphism in Central Limpopo Mobile Belt, Zimbabwe. *J. Metamorph. Geol.*, **7**, 383–403.
- Friend, C. R. L. (1982) Al-Cr substitution in peraluminous sapphirines from the Bjørnesund area, Fiskensæset region, southern West Greenland. *Mineral. Mag.*, **46**, 323–8.
- Grew, E. S., Herd, R. K. and Marquez, N. (1987) Boron-bearing kornerupine from West Greenland: a re-examination of specimens from the type locality. *Mineral. Mag.*, **51**, 695–708.
- Grew, E. S., Chernovsky, J. V., Werdning, G., Abraham, K., Marquez, N and Hinthorne, J. R. (1990) Chemistry of kornerupine and associated minerals, a wet chemical, ion microprobe and X-ray study emphasizing Li, Be, B and F contents. *J. Petrol.*, **31**, 1035–70.
- Herd, R. K. (1973) Sapphirine and kornerupine occurrences within the Fiskensæset Complex. *Grønlands Geol. Unders.*, **51**, 65–71.
- McGregor, V. R. and Friend, C. R. L. (1992) Late Archaean retrograde amphibolite- to granulite-facies relations in the Fiskensæset region, southern West Greenland. *J. Geol.*, **100**, 207–19.
- Schreyer, W. and Abraham, K. (1976) Natural boron-free kornerupine and its breakdown products in a sapphirine rock of the Limpopo Belt, southern Africa. *Contrib. Mineral. Petrol.*, **54**, 109–26.
- Siefert, F. (1975) Boron-free kornerupine: a high pressure phase. *Amer. J. Sci.*, **275**, 57–87.
- Vry, J. K. (1994) Boron-free kornerupine from the Reynolds Range, Arunta Block, central Australia. *Mineral. Mag.*, **58**, 27–37.
- Werdning, G. and Schreyer, W. (1978) Synthesis and crystal chemistry of kornerupine in the system MgO–Al<sub>2</sub>O<sub>3</sub>–SiO<sub>2</sub>–B<sub>2</sub>O<sub>3</sub>–H<sub>2</sub>O. *Contrib. Mineral. Petrol.*, **67**, 247–59.
- Windley, B. F., Ackermann, D. and Herd, R. K. (1984) Sapphirine/kornerupine-bearing rocks and crustal uplift history of the Limpopo Belt, southern Africa. *Contrib. Mineral. Petrol.*, **86**, 342–58.

[Manuscript received 13 April 1994;  
revised 11 May 1994]

KEYWORDS: kornerupine, boron, Fiskensæset, Greenland.

Department of Geology,  
Oxford Brookes University,  
Oxford OX3 0BP

C. R. L. FRIEND

MINERALOGICAL MAGAZINE, MARCH 1995, VOL. 59, PP. 166–168

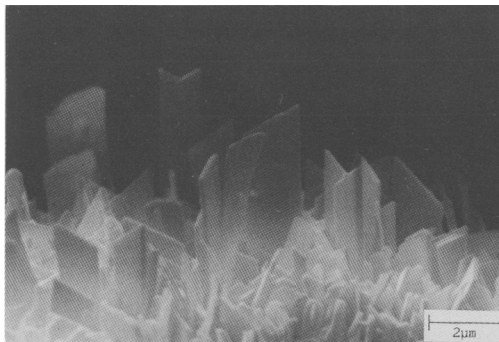
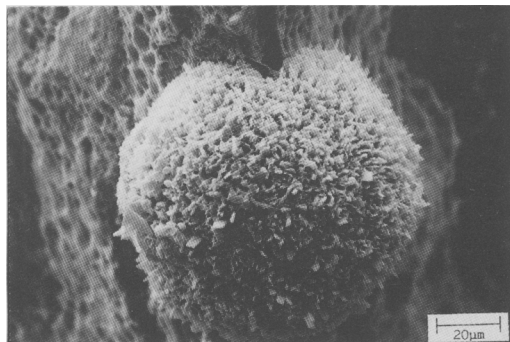
## A second occurrence of mahlmoodite, from Cornwall, England

MAHLMOODITE, FeZr(PO<sub>4</sub>)<sub>2</sub>·4H<sub>2</sub>O, is a rare mineral, hitherto known only from its type locality, the Union Carbide Vanadium mine, Wilson Springs, Garland County, Arkansas, USA. Although illustrated, and correctly formulated by Hey *et al.* (1982) as a new Fe–Zr–Sc phosphate, it has only recently been formally described and named (Milton *et al.*, 1993). Mahlmooodite is very scarce at Wilson Springs and occurs as tiny cream spherules in vugs in vanadium ore. Hey *et al.* (1982) illustrate mahlmooodite spherules on crystals of kolbeckite; more commonly they occur on crystals of sodic pyroxene.

Mahlmooodite has now been identified on a number of specimens from a coastal exposure of Zn-Fe

mineralization at Kerriack Cove, between Porthtowan and Portreath, near Redruth, Cornwall, England (NGR SW678470).

Kerriack Cove is situated in Devonian sandstones and slates of the Falmouth and Portscatho series. At the northern end of the cove, an E–W lode bearing quartz, sphalerite, chalcopyrite and galena was worked, principally for zinc, as part of the Wheal Lushington sett (Dines, 1956; Dewey, 1921). Towards the middle of the cove, an E–W trending mineralized fissure vein crops out in a shelf of rock at the base of the cliff. This vein, up to 4 cm wide, carries mainly sphalerite, pyrite, green chlorite and quartz, with minor galena and chalcopyrite, and



FIGS. 1 and 2. FIG. 1 (*left*) A spherule of mahlmoodite on sphalerite from Kerriack Cove, Cornwall. FIG. 2. (*right*). The surface of a mahlmoodite spherule from Kerriack Cove, Cornwall, showing the lath-like habit of individual crystals.

contains numerous small vugs. Samples of vein material were collected on two visits in 1992 and found to contain occasional cream-brown spherules. Energy dispersive X-ray analysis showed these spherules to be an iron zirconium phosphate which at the time matched no known mineral. Following the description of mahlmoodite by Milton *et al.* (1993), the specimens from Kerriack Cove were re-examined and X-ray diffraction data obtained using a Debye-Scherrer camera (NHM X-ray film no. 9512F). The *d*-spacings of the Kerriack Cove mineral are in excellent agreement with the published spacings for mahlmoodite. However, the line intensities agree less well. Milton *et al.* (1993) collected their data using a Gandolfi camera and the discrepancy in line intensities may be attributed to the difference in XRD technique (J.G. Francis, pers. comm.).

Mahlmoodite from Kerriack Cove occurs as tiny compact spherules up to 0.15 mm in diameter (Fig. 1). The natural colour appears to be creamy-white, but many are brownish due to iron staining. Rarely, the spherules have a looser structure, enabling the morphology of individual crystals to be seen more clearly. The crystals are lath-like, sometimes in short stacks, with various terminations as shown in Fig. 2. Spherules from Wilson Springs usually contained a core of loose material, but this is not the case with the Kerriack Cove samples.

When broken, spherules commonly show a concentric banded structure. Semi-quantitative energy dispersive X-ray analysis shows minor compositional variations from band to band. The core contains significant Al, Si, Sc and Ti, all of which decrease in concentration towards the rim; the core also contains traces of Mn and K. Calcium and magnesium occur throughout the spherule, but at higher levels towards the rim. Zinc is largely absent from the core, but present in the outer zones.

At Wilson Springs, mahlmoodite appears to be the last mineral deposited in the vugs in which it occurs (Milton *et al.*, 1993) and this is also true of the Kerriack Cove specimens. The principal constituents of the mineralized veins at Kerriack Cove appear to be largely contemporaneous in origin. In a few examples, pyrite, which always occurs as pyritohedra, is found on sphalerite, and may be last formed of the sulphides.

Mahlmoodite may be found on any surface, but seems to be more commonly associated with sphalerite. It is always scarce and may easily be overlooked. On a few specimens, mahlmoodite is associated with minute tabular crystals of anatase.

Specimens of mahlmoodite from Kerriack Cove have been deposited at the Natural History Museum, London, and the Smithsonian Institution, Washington, DC.

*Acknowledgements.* The authors are indebted to Mr J. G. Francis of the Natural History Museum, London for the X-ray powder photography.

## References

- Dewey, H. (1921) *Mem. Geol. Surv. Gt. Britain*, Special Reports on the Mineral Resources of Great Britain, vol. 21. HMSO, London.
- Dines, H. G. (1956) *The Metalliferous Mining Region of South-West England*, HMSO, London.
- Hey, M. H., Milton, C. and Dwornik, E. J. (1982) *Mineral. Mag.*, **46**, 493–7.
- Milton, C., McGee, J. J. and Evans, H. T. Jr. (1993) *Amer. Mineral.*, **78**, 437–40.

[Manuscript received 21 February 1994:  
revised 3 May 1994]

KEYWORDS: mahlmoodite, Cornwall, England.

*Tregears,  
Little Treviscoe,  
St Austell,  
Cornwall PL26 7QL,  
UK*

N. J. ELTON

*48 St Julitta,  
Luxulyan,  
Bodmin,  
Cornwall PL30 5ED,  
UK*

J. J. HOOPER